



Diverting to Success

A Groundbreaking Approach to Criminal Justice Reform in Comanche County


Presented by: Oklahoma Alliance of Recovery Resources and Oklahoma Wellness Network

1

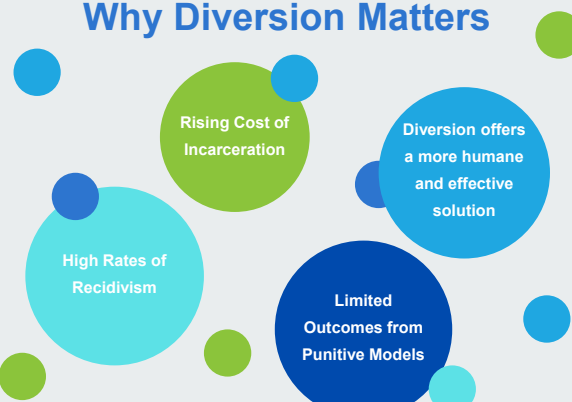
Session Overview

- Explore a systemic diversion model in Comanche County
- Emphasize collaboration, recovery, and cost-efficiency
- Engage in practical strategies to reduce recidivism



2

Why Diversion Matters

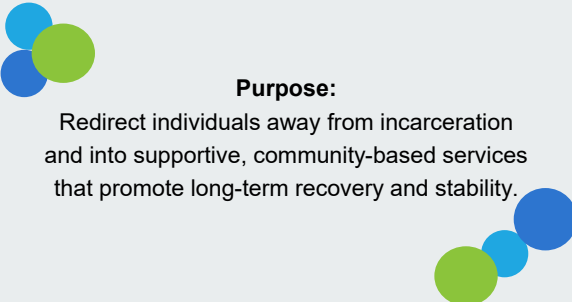


- Rising Cost of Incarceration
- High Rates of Recidivism
- Limited Outcomes from Punitive Models
- Diversion offers a more humane and effective solution

3

The 'Diverting to Success' Model

Purpose:
Redirect individuals away from incarceration and into supportive, community-based services that promote long-term recovery and stability.



4

The 'Diverting to Success' Model

Target Population:

- Individuals with mental health & substance use challenges
- Justice-involved or at risk of incarceration
- Unhoused or in crisis



5

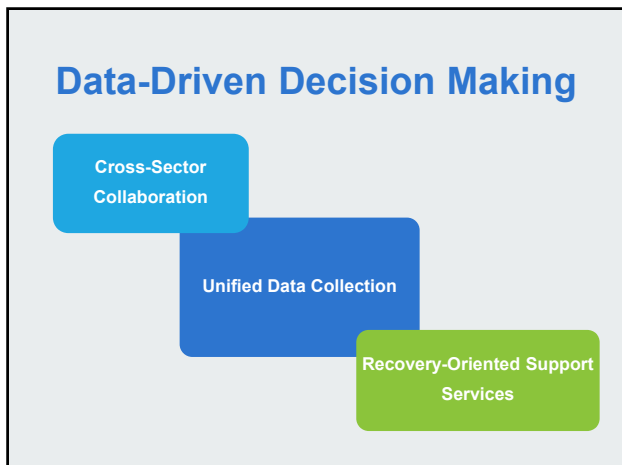
The 'Diverting to Success' Model

Core Components:

- 1. Early Identification**
1. Engage individuals at arrest, court, or crisis point
- 2. Comprehensive Assessment**
1. Evaluate needs (mental health, housing, recovery)
- 3. Community-Based Diversion Plan**
1. Recovery housing, peer support, treatment
- 4. Partnership with Justice System**
1. Courts, law enforcement, and service providers collaborate
- 5. Accountability & Peer Support**
1. Coaching, case management, Drug testing, and progress reviews
- 6. Success Metrics**
1. Measuring each participant's Recovery Capital.



6

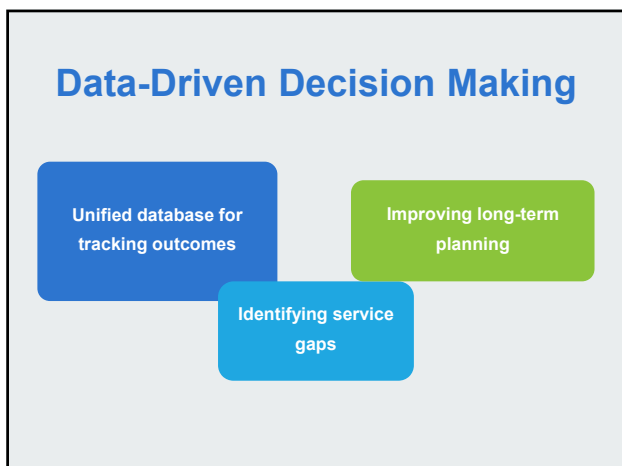


7

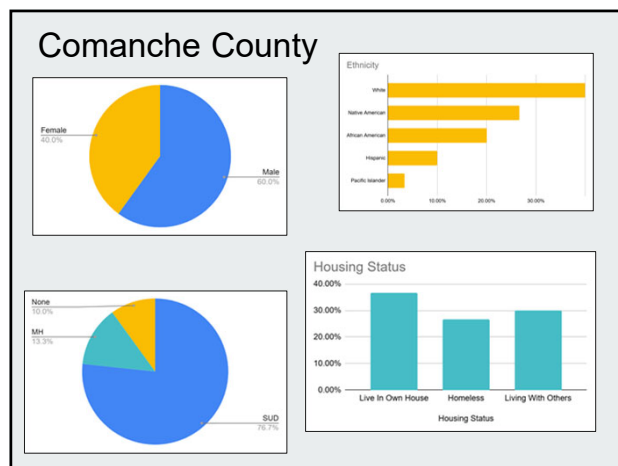
Interagency Collaboration

- 1. Comanche County Jail**
 - Regular communication with jail officials
- 2. Courts and prosecutors**
 - Building relationships with court officials
 - Weekly courtroom appearances and drop ins
- 3. Behavioral health providers**
 - MOUs and Collaborations w/community programs
- 4. Community partners**
 - Housing (sober living/recovery homes)
 - Education and Employment resources
 - Faith-based and Cultural Organizations

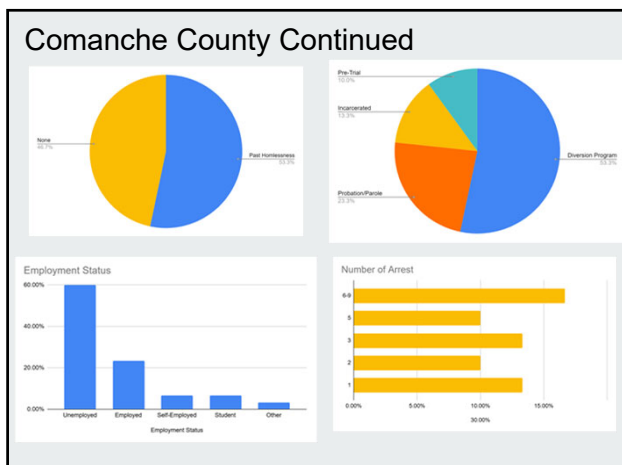
8



9



10



11

Recovery-Oriented Approach

12

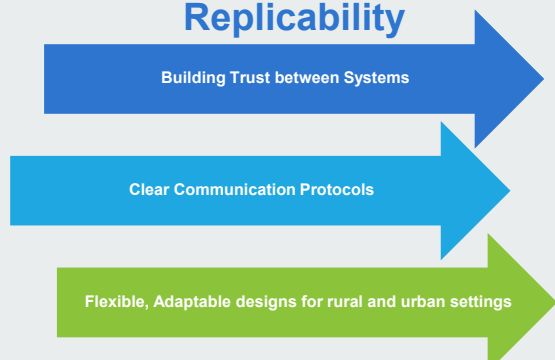
Fiscal and Community Impact

- Reduced jail population
- Better use of public resources
- Stronger community reintegration outcomes
- Cost savings for taxpayers



13

Lessons Learned and Replicability



14

Q & A

Where?
What?
Why?
How?



15



Learn More About Us!!

16

Session Evaluation

SCAN ME



DIVERTING TO SUCCESS



17